



SERV OBN – Hospital Familiarisation High Wycombe General Hospital (HWG)



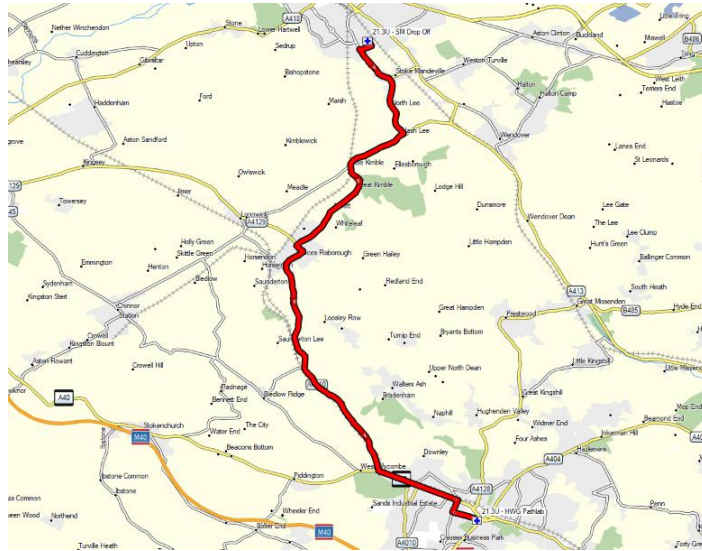
Hospital Current Name: Wycombe Hospital
Address: Queen Alexandra Rd,
High Wycombe
HP11 2TT

Main Hospital No: 01494 526161
Help Desk No: 01494 425010
Blood: 01494 425237
Path Lab Direct No: 01494 425398 or call hospital and ask them to beep the on-call haematologist
as Help Desk cannot transfer external calls

Routes Included: Stoke Mandeville Hospital to High Wycombe General Hospital (SM - HWG)

Special Instructions: The entrance door to the Path Lab is about 150 metres after the main hospital entrance on the right just before the perpendicular parking bay. There is a silver door with a bell. The bell has rarely worked so you should call the hospital and ask them to beep the on-call haematologist. Please resist the temptation to knock on the window as, particularly late at night, this can frighten the staff.

13/10/2025



19/05/2021

The route from Stoke Mandeville (SM) to High Wycombe General (HWG) is the most likely reason to arrive at High Wycombe General Hospital. If you are going there direct to collect then the instructions from the main entrance are identical as there is only one way into the hospital. The route can be found in the Trip Planner on the Sat Navs. The bulk of the route uses the A4010

NOTE: THE ROUTE INTERSECTS THE COURSE OF THE PLANNED HS2 SO THERE WILL BE ONGOING WORKS AND DETOURS OVER THE COURSE OF SEVERAL YEARS

Leave Stoke Mandeville Hospital (SM) by retracing the inbound route back to the Ambulance station. Keeping that on your left exit onto the B4443 by turning left.

Follow the B4443 to the first roundabout where you take the 2nd exit (right) onto the A4010 Risborough Road

At the next roundabout take the 2nd exit (right) and continue on the A4010 Risborough Road

At the next roundabout take the 2nd exit (straight) and continue on the A4010 now called the Aylesbury Road

You will arrive in Princes Risborough and at the next roundabout take the 1st exit (left). You will see a domed school to your left and Tesco ahead.

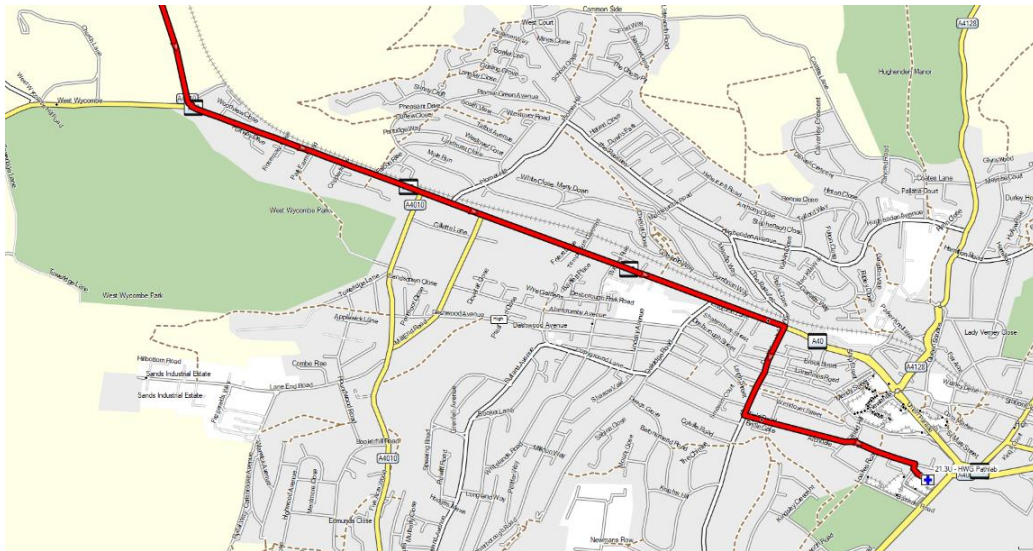
You are still on the A4010 but it is now called New Road.

At the next roundabout take the 2nd exit (right) still following the A4010 now called Bell Street

Follow the A4010 all the way to High Wycombe. This is first called Wycombe Road then eventually Bradenham Road as you approach High Wycombe

As you approach High Wycombe you will come to Pedestal roundabout with a fuel station to your left, this is the junction with the A40.

/continued.....



19/05/2021

We will pick up the street level view of this route as we approach the Pedestal Roundabout junction with the A40



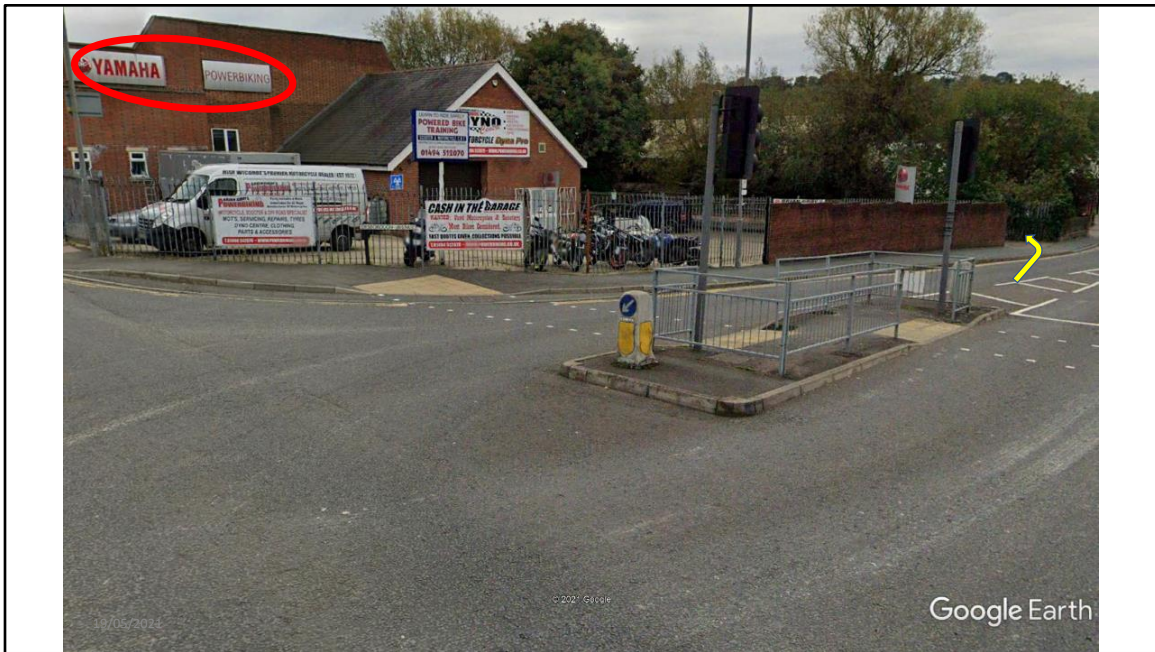
At the roundabout take the 1st exit (left) to join the A40



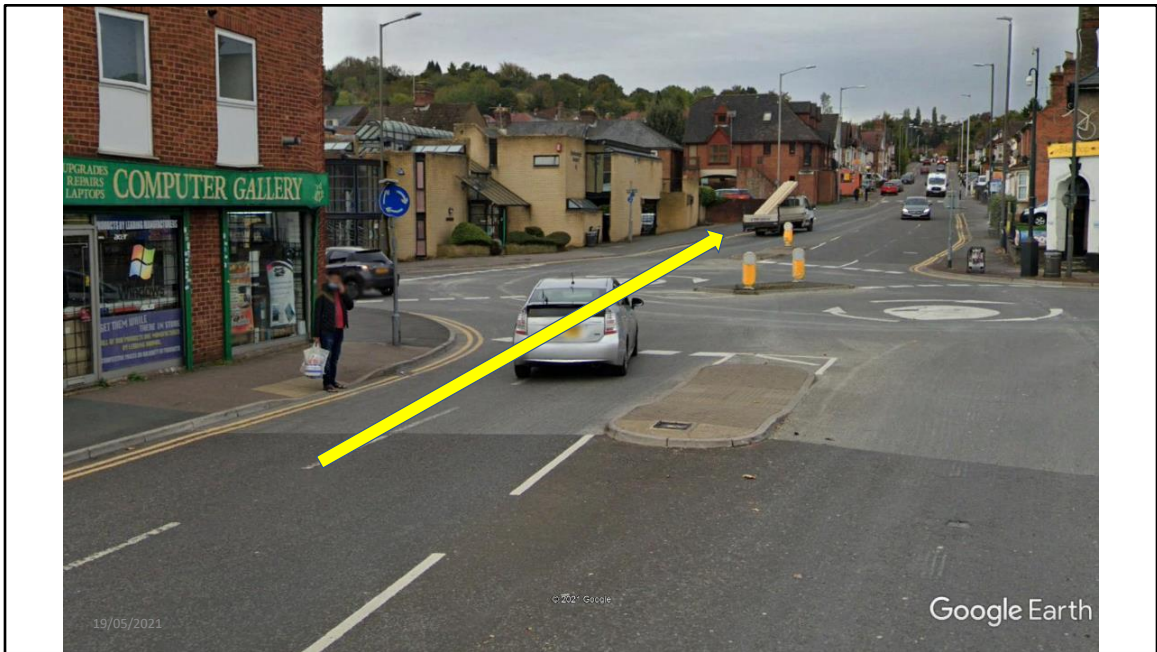
Take 1st exit to follow A40 West Wycombe Road towards Wycombe



At the second traffic light junction you will see Yamaha Powerbiking on the opposite corner as marked by the circle
Turn right onto Desborough Road



Note: As you turn left you will see the entrance to Brian Gray's Powerbiking marked by the arrow. This is the Yamaha dealer where we service all the FJR's. Carry on along Desborough Avenue past Powerbiking.



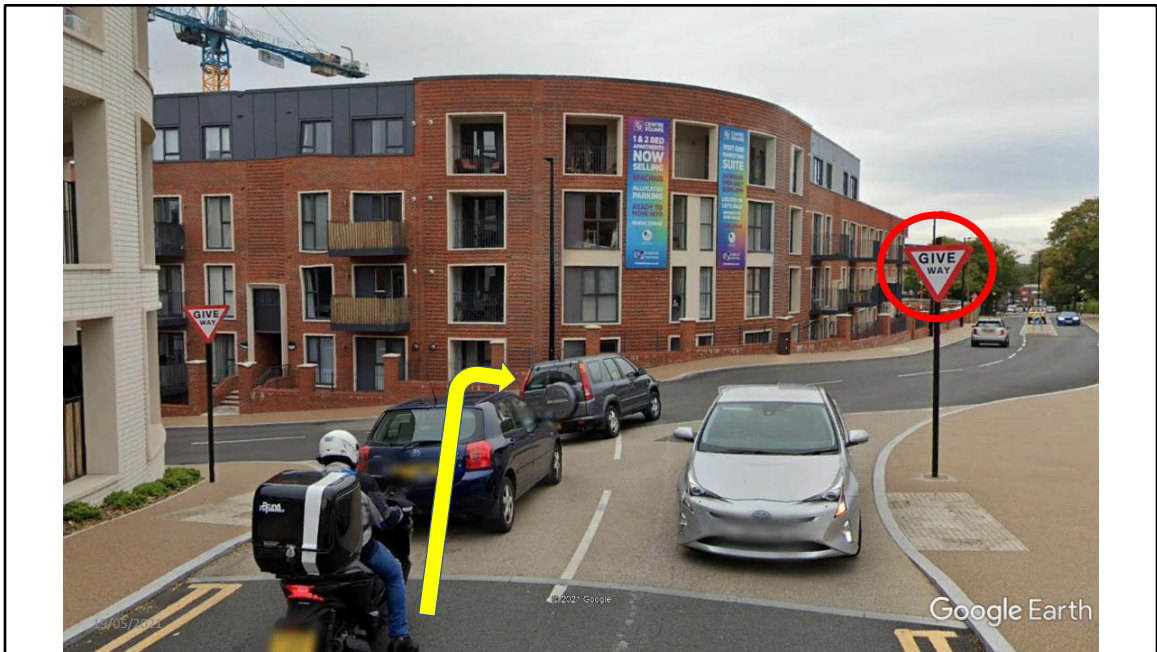
At the double roundabout go straight across and continue on Desborough Avenue.



Continue on Desborough Avenue and take the turning on the left immediately after the temporary traffic light into Suffield Road.



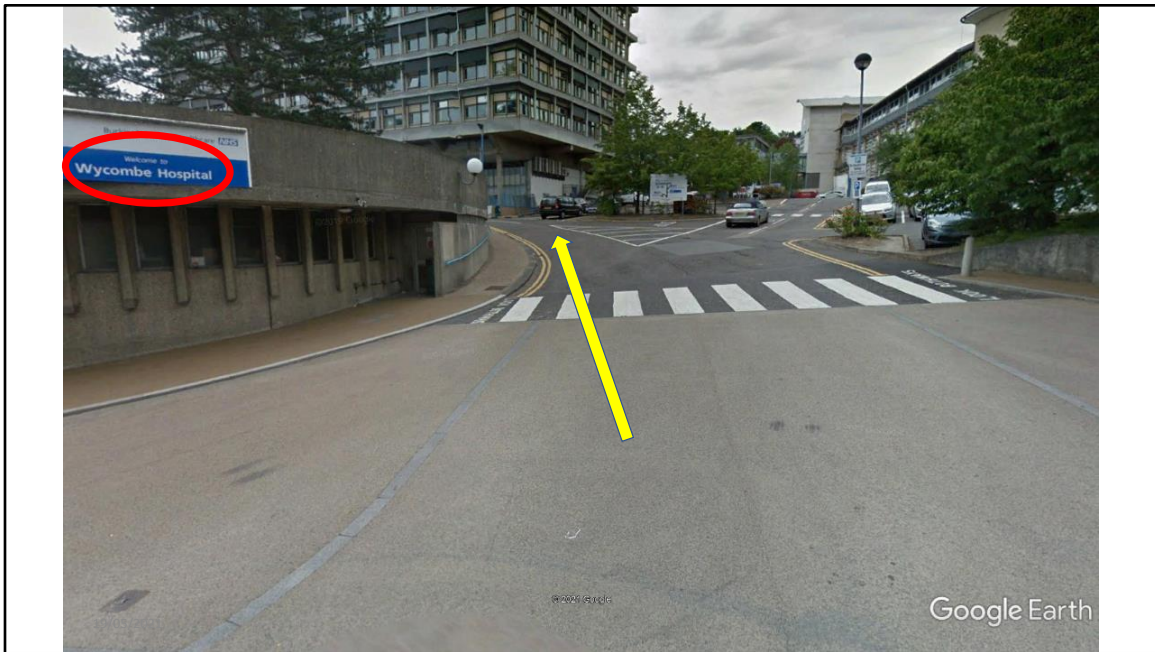
Continue in Suffield Road until you reach the give way.



Turn right at the give way, which is still Suffield Road, but turns into Queen Alexandra Road after the next junction.



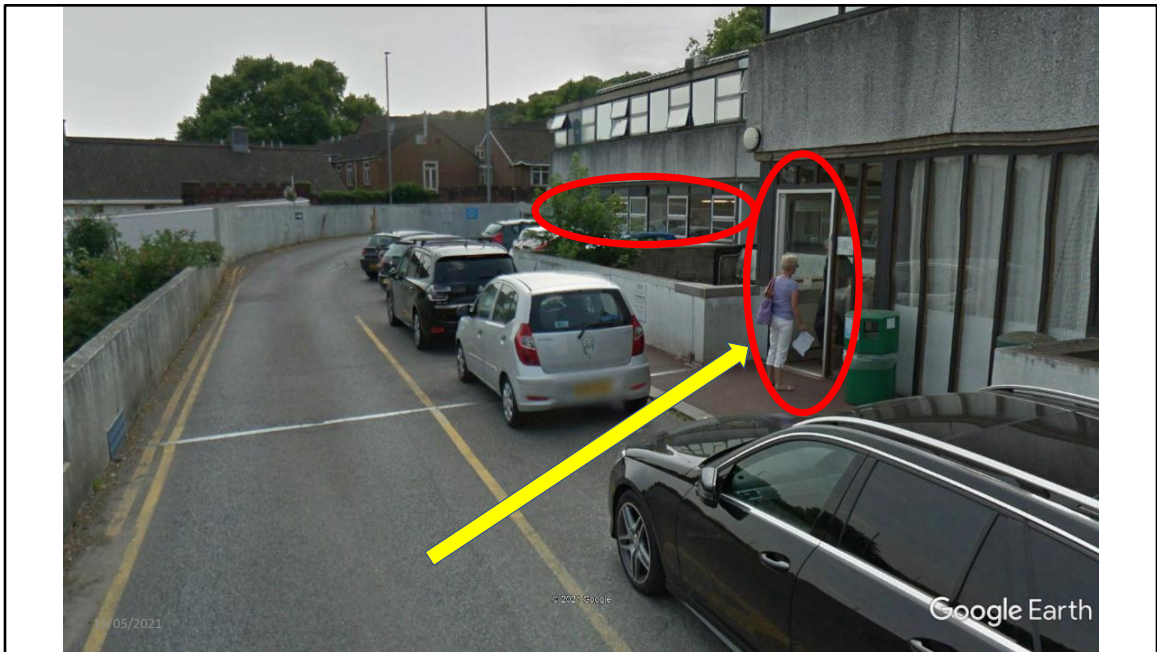
Continue on Queen Alexandra Road until you reach High Wycombe General Hospital
Turn right into the hospital



As you enter the hospital keep to the left fork and continue towards the Hospital Main Entrance and car park



Keep straight on past the car park entrance on your left and the Main Hospital Entrance on your right, following the one way system.



The collection and drop off point is the silver door on the right, use the bell to the right of the door to attract the attention of the Pathlab staff or call the main hospital and get them to beep the online haematologist.

The Pathlab itself is on the ground floor behind the windows circled in the above picture

Note: If you are using a charity vehicle you can park in the disabled bays on the right. If not, park either in the parking area on the right outside the Pathlab windows or the drop off point back at the Main Entrance



To exit the hospital, or to return to the main entrance, follow the one way system.
DO NOT turn round and ride the other way



At the stop sign give way to traffic coming from the right then continue to the Hospital Exit in the distance on your left



At the give way turn left and exit the hospital



Turn left onto the A404 which is a dual carriageway so you must turn left.
To return to the hospital continue to the roundabout and take the first left
To go the other way on the A404 turn left, then at the roundabout do a u turn and head back up the A404